

Sire 2008 CANADIAN BLONDE D'AQUITAINE Summary

2008



Fantome, Canada's first Blonde bull was imported in 1971

THIS SUMMARY REPRESENTS BULLS WITH MORE THAN 15 PROGENY •

The complete Blonde d'Aquitaine Sire Summary can be found online at: www.biobeef.com •

Sire Summary: Compiled by Beef Improvement Ontario (BIO) •

PROVEN sires (> 15 calves sired)		Prog					GProg		Mat.					
(Evaluated 2008-02-08)		Herds	CE	BW	WG	YG	Herds	CE	Milk	REA	IMF	BFAT	SC	HT
AMARYLLIS NANCY NOEL		%wb	58	56	22	23		54	92			30	91	97
reg: R 4253	Bdate: 19880613	71	BIO EPD -1.1	0.6	23.0	28.0	29.0	0.1	23.9			-1.1	-0.4	0.6
tattoo: DRR 36X		19	acc 80	93	86	77	9	66	62			61	70	69
AMBER DJANGO 32D		%wb	61	49	28	22		76	17					
reg: D 6694	Bdate: 19940327	59	BIO EPD -0.9	1.0	24.0	28.0	38.0	1.8	11.2					
tattoo: AMRS 32D		3	acc 76	92	76	60	3	62	68					
BAMBERG LOBSTER 14A		%wb	54	79	5	8		48	34	75		56	7	84
reg: R 6850	Bdate: 19910525	78	BIO EPD -1.3	-0.8	16.0	18.0	49.0	-0.3	13.9	0.7		-1.0	-2.4	0.1
tattoo: MW 14A		1	acc 79	94	88	77	1	61	70	10		12	17	77
BEAU BOIS AIME 26A		%wb	37	32	8	15		26	58			98	52	92
reg: R 6614	Bdate: 19910310	27	BIO EPD -2.3	1.9	18.0	24.0	5.0	-1.9	16.9			-0.5	-1.3	0.4
tattoo: VBLB 26A		10	acc 68	87	51	50	2	49	37			44	59	56
BEAU BOIS BAMBOU 34B		%wb	23	30	1	1		63	96					
reg: R 7655	Bdate: 19920429	25	BIO EPD -3.3	2.0	-1.0	-7.0	67.0	0.7	26.7					
tattoo: VBLB 34B		2	acc 79	84	81	72	2	70	78					
BEAU BOIS BOBY 7B		%wb	25	27	34	31		10	1			88	38	75
reg: R 7431	Bdate: 19920111	20	BIO EPD -3.2	2.2	26.0	32.0	14.0	-3.8	3.8			-0.8	-1.4	0.0
tattoo: VBLB 7B		1	acc 57	83	63	59	3	53	56			48	62	59
BEAU BOIS CAFE 26C		%wb	1	1	93	94		27	20	80	61	36	63	93
reg: R 8616	Bdate: 19930215	54	BIO EPD -9.7	6.2	44.0	69.0	10.0	-1.8	11.8	0.7	-0.3	-1.1	-1.1	0.4
tattoo: VBLB 26C		14	acc 75	92	83	71	3	49	49	14	14	53	65	63
BEAU BOIS CANCAN 44C		%wb	37	11	42	16		81	73			90	49	
reg: R 8730	Bdate: 19930327	84	BIO EPD -2.3	3.5	28.0	24.0	13.0	2.3	19.1			-0.8	-1.3	
tattoo: VBLB 44C		6	acc 81	94	74	61	3	59	54			22	30	
BELLEVUE'S KENWORTH 15K		%wb	2	25	6	5		5	32					
reg: [CAN]R15887	Bdate: 2000010E	71	BIO EPD -8.2	2.3	16.0	15.0	10.0	-4.9	13.7					
tattoo: MDD 15K		4	acc 78	93	87	74	1	49	50					
BFC IGHA 1E		%wb	17	30	33	43		42	34	99	34	5	17	30
reg: R 32	Bdate: 19730325	91	BIO EPD -3.8	2.0	26.0	36.0	74.0	-0.7	13.9	1.3	-0.3	-1.3	-1.9	-0.2
tattoo: BFC 1E		18	acc 88	96	89	87	26	87	88	35	13	71	78	77
BILTONS BEN 19B		%wb	25	30	35	55		54	1					
reg: D 4767	Bdate: 19920209	18	BIO EPD -3.2	2.0	26.0	40.0	13.0	0.1	1.2					
tattoo: SMB 19B		2	acc 56	80	56	50	3	47	51					
BLON DELL 38D		%wb	11	35	75	81		12	25	50	22	77	40	75
reg: R 10723	Bdate: 19940215	53	BIO EPD -4.6	1.7	36.0	54.0	1.0	-3.5	12.6	0.4	-0.3	-0.9	-1.4	0.0
tattoo: KJM 38D		2	acc 74	92	84	55	1	45	25	13	13	15	18	18
BNO CERYL 24C		%wb	86	95	78	80		81	12			93	19	86
reg: R 9226	Bdate: 19930330	119	BIO EPD 1.0	-2.7	37.0	53.0	35.0	2.3	10.2			-0.7	-1.8	0.2
tattoo: BNO 24C		1	acc 84	96	92	72	1	68	71			48	61	58
BNO COCO 45C		%wb	88	88	13	62		81	61			81	38	95
reg: R 9479	Bdate: 19930501	192	BIO EPD 1.3	-1.6	20.0	43.0	2.0	2.3	17.3			-0.9	-1.4	0.5
tattoo: BNO 45C		1	acc 90	97	53	51	1	71	31			48	62	59
BNO DON 25X		%wb	92	93	18	8		83	29			89	55	10
reg: R 5401	Bdate: 19880923	22	BIO EPD 1.9	-2.3	22.0	19.0	65.0	2.5	13.2			-0.8	-1.2	-0.6
tattoo: BNO 25X		4	acc 68	84	72	66	3	69	77			52	62	60
BNO FERN 1F		%wb	3	1	85	87		30	19			38	16	30
reg: R 13035	Bdate: 19960101	140	BIO EPD -6.9	6.6	39.0	60.0	8.0	-1.6	11.5			-1.1	-1.9	-0.2
tattoo: BNO 1F		3	acc 86	96	92	73	2	58	50			30	39	37
BNO GARBO 513X		%wb	21	45	3	27		92	12			93	29	24
reg: D 1566	Bdate: 19880524	155	BIO EPD -3.5	1.2	14.0	30.0	64.0	3.8	10.1			-0.7	-1.6	-0.3
tattoo: BNO 513X		2	acc 88	97	94	85	1	68	70			48	62	59
BNO KEN 57K		%wb	81	85	64	49		96	75	47	97	90	1	4
reg: [CAN]R15786	Bdate: 20000302	30	BIO EPD 0.6	-1.3	32.0	38.0	0.0	4.8	19.4	0.4	-0.1	-0.8	-3.5	-0.9
tattoo: BNO 57K		1	acc 66	87	71	65	0	32	30	36	36	41	51	49
BNO KRIST 94K		%wb	75	79	99	98		90	87					
reg: [CAN]R15789	Bdate: 20000313	28	BIO EPD 0.0	-0.8	53.0	84.0	0.0	3.4	22.0					
tattoo: BNO 94K		1	acc 63	85	49	48	0	31	25					
BNO WAYNE 399W		%wb	2	1	21	45		75	96			87	84	64
reg: R 3982	Bdate: 19870515	29	BIO EPD -7.9	6.9	23.0	37.0	28.0	1.7	26.5			-0.8	-0.7	-0.1
tattoo: BNO 399W		3	acc 62	87	72	74	6	56	61			66	74	74

PROVEN sires (> 15 calves sired) (Evaluated 2008-02-08)		Prog					GProg		Mat.					
		Herds	CE	BW	WG	YG	Herds	CE	Milk	REA	IMF	BFAT	SC	HT
BNO YOGI 483X		%wb	13	12	44	75		51	15			94	71	86
reg: R 4534	Bdate: 19880418	211	BIO EPD -4.3	3.4	28.0	49.0	79.0	-0.1	10.7			-0.7	-1.0	0.2
tattoo: BNO 483X		39	acc 89	97	94	84	18	79	82			48	62	59
BOM KARL 82K		%wb	58	41	54	54		74	20					
reg: [CAN]R15667	Bdate: 20000217	56	BIO EPD -1.1	1.4	30.0	40.0	1.0	1.6	11.7					
tattoo: BOM 82K		2	acc 79	91	81	73	1	41	36					
BOM MOE 23M		%wb	44	27	87	73		63	39			23	13	63
reg: [CAN]R16607	Bdate: 20020215	16	BIO EPD -1.9	2.2	40.0	48.0	0.0	0.7	14.6			-1.2	-2.1	-0.1
tattoo: BOM 23M		1	acc 53	79	67	64	0	31	32			49	62	59
BOV MAJESTY OF THE ALPS 1E		%wb	12	20	82	90		27	87			26	30	95
reg: R 127	Bdate: 19731219	70	BIO EPD -4.5	2.7	38.0	64.0	80.0	-1.8	22.0			-1.1	-1.6	0.5
tattoo: BOV 1E		17	acc 83	93	90	85	15	79	82			28	35	35
BRYDOWNS ELMO 149E		%wb	93	76	56	51		6	42	97	94	74	77	82
reg: R 12790	Bdate: 19950301	29	BIO EPD 2.2	-0.6	30.0	39.0	18.0	-4.4	14.8	1.1	-0.2	-0.9	-0.9	0.1
tattoo: BDB 149E		5	acc 66	87	73	68	3	44	48	43	13	49	63	60
BRYDOWNS HARVEY 203H		%wb	37	9	50	21		6	74	22	21	38	76	62
reg: R 14777	Bdate: 19980312	37	BIO EPD -2.3	3.7	29.0	27.0	1.0	-4.6	19.3	0.2	-0.4	-1.1	-0.9	-0.1
tattoo: BDB 203H		3	acc 72	90	78	69	1	42	40	48	48	52	58	54
CANADIAN GOLD POLLED DANDY 10G		%wb	5	8	18	14		3	29	74	10	69	27	30
reg: R 13776	Bdate: 19970315	41	BIO EPD -5.9	3.8	22.0	23.0	0.0	-5.5	13.2	0.6	-0.4	-1.0	-1.6	-0.2
tattoo: RAP 10G		3	acc 68	88	29	36	0	28	11	37	37	43	58	55
CANADIAN RADAR 5W		%wb	44	65	73	70		95	89					
reg: R 5163	Bdate: 19870220	55	BIO EPD -1.9	0.1	35.0	47.0	15.0	4.5	23.0					
tattoo: CBB 5W		12	acc 77	92	44	41	5	67	54					
CANADIAN ROCKY 01T		%wb	7	11	46	47		9	8			77	57	88
reg: R 2992	Bdate: 19850512	109	BIO EPD -5.3	3.5	29.0	37.0	19.0	-3.9	8.9			-0.9	-1.2	0.3
tattoo: CBB 01T		19	acc 85	95	70	61	10	78	63			47	56	54
CIA JAGUAR 1F		%wb	1	2	69	71		3	10	99	23	72	94	96
reg: R 86	Bdate: 19740118	189	BIO EPD -11.4	5.3	34.0	47.0	97.0	-5.9	9.5	1.2	-0.3	-1.0	-0.2	0.6
tattoo: CIA 1F		46	acc 91	97	94	87	17	82	85	42	24	67	75	73
CLARE ELL MARCUS 27G		%wb	80	68	14	7		20	6	96	52	82	17	56
reg: R 13774	Bdate: 19970310	17	BIO EPD 0.5	-0.1	20.0	18.0	2.0	-2.5	8.0	1.0	-0.3	-0.9	-1.9	-0.1
tattoo: CBF 27G		3	acc 56	81	54	52	1	33	29	41	41	49	62	60
CLARE ELL MAX 49C		%wb	6	27	10	52		34	1	96	3	4	63	96
reg: R 9344	Bdate: 19930417	86	BIO EPD -5.7	2.2	19.0	39.0	16.0	-1.3	4.9	1.0	-0.5	-1.3	-1.1	0.6
tattoo: CBF 49C		28	acc 85	95	86	79	6	66	64	42	38	66	76	72
CLASSIC LUKE 3L		%wb	66	58	8	8		73	72	39	95	89		
reg: [CAN]D12750	Bdate: 20010221	18	BIO EPD -0.6	0.5	18.0	19.0	1.0	1.5	19.0	0.3	-0.2	-0.8		
tattoo: SA 3L		1	acc 50	78	67	48	1	25	18	10	10	12		
CO CO POWER MAN 1A		%wb	7	37	3	17		1	3			5	87	85
reg: R 7060	Bdate: 19910306	21	BIO EPD -5.4	1.6	14.0	25.0	5.0	-9.6	6.9			-1.3	-0.6	0.2
tattoo: MMJ 1A		2	acc 60	84	72	71	1	41	45			49	62	60
CONRICH PHILIP 6X		%wb	89	82	44	58		72	56			38	70	97
reg: R 4487	Bdate: 19880515	34	BIO EPD 1.4	-1.0	28.0	41.0	19.0	1.4	16.6			-1.1	-1.0	0.7
tattoo: DES 6X		7	acc 65	87	37	36	5	58	50			15	20	19
CROCUS HILL CALIBRE 5C		%wb	91	90	98	91		2	10			99	92	
reg: D 5931	Bdate: 19930325	63	BIO EPD 1.7	-1.8	52.0	65.0	3.0	-6.3	9.5			-0.3	-0.3	
tattoo: FCS 5C		3	acc 75	92	78	52	2	43	29			12	17	
CRYSTAL LAVERNE 3L		%wb	84	84	39	44		18	52	91	5	92	73	14
reg: Bdate: 20010120		18	BIO EPD 0.8	-1.2	27.0	36.0	4.0	-2.7	16.1	0.9	-0.4	-0.8	-0.9	-0.5
tattoo: PFER 3L		1	acc 59	82	75	66	1	40	45	52	52	57	68	66
CYR JULIUS 790J		%wb	79	61	74	12		74	46			58	22	24
reg: R 14899	Bdate: 19990422	28	BIO EPD 0.4	0.3	36.0	22.0	16.0	1.6	15.3			-1.0	-1.8	-0.3
tattoo: CYR 790J		3	acc 66	86	79	77	2	50	60			72	80	78
DDD CLAY 12H		%wb	2	16	63	80		4	4	96		3	6	82
reg: R 365	Bdate: 19760402	52	BIO EPD -7.6	3.0	32.0	53.0	60.0	-5.1	7.1	1.0		-1.4	-2.5	0.1
tattoo: DDD 12H		11	acc 82	93	83	79	17	82	80	12		60	69	68

PROVEN sires (> 15 calves sired) (Evaluated 2008-02-08)		Prog				GProg				Mat.				
		Herds	CE	BW	WG	YG	Herds	CE	Milk	REA	IMF	BFAT	SC	HT
DJ XRADIATION 29X		%wb	3	4	76	84		39	55	51		4	22	97
reg: R 4738	Bdate: 19880418	36	BIO EPD -6.8	4.5	36.0	57.0	7.0	-0.9	16.5	0.4		-1.3	-1.7	0.6
tattoo: EKE 29X		9	acc 75	90	71	68	5	62	57	14		38	40	45
DJ ZAMBUCA 33Z		%wb	2	1	78	88		1	1	87		1	26	91
reg: R 6642	Bdate: 19900509	331	BIO EPD -7.9	6.2	37.0	61.0	92.0	-9.8	-0.7	0.8		-0.5	-1.1	-0.5
tattoo: EKE 33Z		37	acc 94	98	96	95	13	84	86	86		72	88	88
DJK BARMAN 31B		%wb	69	28	44	43		70	33	60		90	68	30
reg: R 8115	Bdate: 19920408	67	BIO EPD -0.4	2.1	28.0	36.0	16.0	1.3	13.8	0.5		-0.2	-1.0	-1.6
tattoo: DJK 31B		7	acc 81	93	84	75	6	62	58	12		12	14	17
DJK DR HOOK 21D		%wb	6	3	44	55		24	69			78	40	
reg: R 10643	Bdate: 19940313	54	BIO EPD -5.8	4.9	28.0	40.0	5.0	-2.1	18.5			-0.9	-1.4	
tattoo: DJK 21D		8	acc 76	92	69	52	2	46	40			12	17	
DOUBLE F DEMYTREE 11D		%wb	44	81	78	55		96	73					
reg: D 6550	Bdate: 19940220	27	BIO EPD -1.9	-0.9	37.0	40.0	8.0	4.9	19.2					
tattoo: FERG 11D		2	acc 65	87	68	49	6	50	48					
DOUBLE F STEVE 5Z		%wb	89	95	35	32		79	1			87	65	85
reg: D 2530	Bdate: 19900312	133	BIO EPD 1.5	-2.8	26.0	32.0	38.0	2.0	5.3			-0.8	-1.1	0.2
tattoo: FERG 5Z		1	acc 86	96	94	78	1	62	68			48	62	59
DOUBLE L ALEXANDER 7A		%wb	14	67	3	13		16	26	64		75	17	22
reg: D 3772	Bdate: 19910219	33	BIO EPD -4.2	0.0	13.0	23.0	11.0	-2.9	12.7	0.5		-0.9	-1.9	-0.3
tattoo: LNL 7A		13	acc 71	89	72	61	4	55	57	31		35	45	43
DOUBLE L WEE WILLY 9W		%wb	99	98	11	43		97	27	73		26	49	30
reg: C 15234	Bdate: 19870310	118	BIO EPD 6.4	-4.6	19.0	36.0	61.0	5.4	12.9	0.6		-0.3	-1.0	-1.6
tattoo: LNL 9W		21	acc 85	96	88	84	13	75	79	36		27	56	60
DOUBLE L XAMPLE 22X		%wb	3	14	85	96		1	19	85		35	65	98
reg: C 15975	Bdate: 19880330	72	BIO EPD -7.2	3.2	39.0	75.0	18.0	-7.4	11.5	0.8		-1.1	-1.1	0.8
tattoo: LNL 22X		7	acc 80	93	76	73	4	66	64	52		67	73	74
EUROCAN FAN 01E		%wb	6	34	37	19		43	25					
reg: R 40	Bdate: 19730818	16	BIO EPD -5.6	1.8	26.0	26.0	16.0	-0.6	12.6					
tattoo: EUR 01E		10	acc 53	81	55	41	6	52	58					
FERGIE 8M		%wb	53	47	82	62		3	46	53		22	16	89
reg: [CAN]R16779	Bdate: 20020423	101	BIO EPD -1.4	1.1	38.0	43.0	9.0	-5.4	15.3	0.5		-0.3	-1.2	-0.5
tattoo: FERG 8M		2	acc 83	95	92	90	1	47	52	84		84	87	85
FOR CHARLOT 90C		%wb	80	70	37	9		87	82			90	80	5
reg: R 10322	Bdate: 19931027	48	BIO EPD 0.5	-0.2	26.0	19.0	8.0	3.0	20.7			-0.8	-0.8	-0.8
tattoo: FOR 90C		3	acc 73	90	71	56	1	43	41			35	45	43
FOR HUSSARD 66H		%wb	93	92	42	47		6	37					
reg: D 11028	Bdate: 19981212	28	BIO EPD 2.1	-2.1	28.0	37.0	1.0	-4.4	14.3					
tattoo: FOR 66H		1	acc 74	87	66	45	1	45	33					
FORT ELLICE SAMARAI 56X		%wb	61	63	19	16		65	95	94		96	8	8
reg: R 5050	Bdate: 19880425	117	BIO EPD -0.9	0.2	22.0	25.0	71.0	0.9	25.3	0.9		-0.1	-1.3	-2.3
tattoo: ABF 56X		29	acc 85	96	81	82	15	76	76	65		21	76	76
FORTY ACRE NUZZLER 13N		%wb	37	67	12	23		44	40					
reg:	Bdate: 20030213	27	BIO EPD -2.3	0.0	20.0	28.0	0.0	-0.5	14.7					
tattoo: FAB 13N		1	acc 58	83	72	51	0	24	12					
GELSTAR 801X "T"		%wb	27	23	4	12		68	93	91		94	7	70
reg: R 4339	Bdate: 19880216	140	BIO EPD -3.1	2.5	15.0	22.0	49.0	1.1	24.6	0.9		-0.2	-1.3	-1.0
tattoo: GEL 801X		32	acc 90	96	91	85	14	81	80	28		14	68	76
GELSTAR 803X "T"		%wb	18	55	12	13		1	1	79		90	22	87
reg: R 4308	Bdate: 19880217	94	BIO EPD -3.7	0.7	20.0	23.0	15.0	-9.7	2.5	0.7		-0.8	-1.8	0.2
tattoo: EL 803X		23	acc 82	95	90	83	7	61	56	60		70	74	78
GELSTAR 807X		%wb	1	1	77	90		2	1			49	73	99
reg: R 4325	Bdate: 19880222	23	BIO EPD -10.4	7.4	36.0	63.0	5.0	-6.0	1.3			-1.0	-1.0	1.0
tattoo: GEL 807X		3	acc 65	85	59	57	3	53	47			42	52	50
GELSTAR 817X "T"		%wb	92	90	42	57		14	1	67		38	18	77
reg: R 4313	Bdate: 19880405	251	BIO EPD 1.9	-1.8	28.0	41.0	64.0	-3.2	1.1	0.5		-0.3	-1.2	-0.9
tattoo: EL 817X		18	acc 92	98	95	93	8	79	82	74		54	82	82

PROVEN sires (> 15 calves sired) (Evaluated 2008-02-08)		Prog				GProg				Mat.				
		Herds	CE	BW	WG	YG	Herds	CE	Milk	REA	IMF	BFAT	SC	HT
GELSTAR SHERIFF 423S		%wb	93	84	1	3		65	49			2	3	24
reg: R 2170	Bdate: 19840410	23	BIO EPD	2.3	-1.2	5.0	12.0	7.0	0.9	15.7		-1.4	-2.8	-0.3
tattoo: GEL 423S		7	acc	63	83	66	64	2	53	45		59	68	66
HANOVER BE JAY 50B		%wb	12	1	72	45		1	1			55	26	95
reg: R 9139	Bdate: 19920407	74	BIO EPD	-4.4	6.9	35.0	37.0	48.0	-8.7	-4.5		-1.0	-1.6	0.5
tattoo: HSF 50B		1	acc	81	94	83	80	2	71	76		79	85	84
HANOVER CONCORD 23C		%wb	11	21	98	99		86	98	55		88	98	75
reg: R 10147	Bdate: 19930123	53	BIO EPD	-4.6	2.6	51.0	85.0	14.0	2.8	28.8	0.5	-0.8	0.7	0.0
tattoo: HSF 23C		2	acc	76	91	86	83	3	59	62	45	50	59	38
HANOVER EL PASO 103E		%wb	7	3	89	91		1	9					
reg: R 12526	Bdate: 19951003	40	BIO EPD	-5.3	4.7	41.0	64.0	4.0	-8.9	9.3				
tattoo: HSF 103E		2	acc	72	89	81	72	2	51	49				
HANOVER ENCORE 5E		%wb	34	28	99	99		6	11	78	69	13	94	99
reg: R 11375	Bdate: 19950115	138	BIO EPD	-2.5	2.1	57.0	90.0	17.0	-4.4	9.8	0.7	-0.3	-1.2	-0.3
tattoo: HSF 5E		12	acc	88	96	92	85	6	63	63	56	56	61	60
HANOVER EXPRESS 5C		%wb	5	4	67	68		7	99	73	92	84		78
reg: R 10237	Bdate: 19930103	22	BIO EPD	-5.9	4.5	33.0	46.0	9.0	-4.3	30.8	0.6	-0.2	-0.9	0.0
tattoo: HSF 5C		9	acc	69	86	71	61	2	50	48	10	10	12	16
HANOVER FASINATOR 49C		%wb	92	93	4	3		91	2			94	25	89
reg: R 10151	Bdate: 19930302	80	BIO EPD	2.0	-2.3	15.0	11.0	7.0	3.6	5.7		-0.7	-1.7	0.3
tattoo: HSF 49C		3	acc	82	94	86	78	2	58	54		22	30	28
HANOVER GHOSTBUSTER 83G		%wb	56	49	72	68		2	35	16	91	7	80	23
reg: R 13202	Bdate: 19970501	31	BIO EPD	-1.2	1.0	35.0	46.0	8.0	-6.4	14.0	0.1	-0.2	-1.3	-0.8
tattoo: HSF 83G		5	acc	69	88	72	59	1	48	50	19	19	22	30
HANOVER HAWKEYE 5H		%wb	56	65	41	34		5	1	82	28	74	17	66
reg: R 14100	Bdate: 19980112	25	BIO EPD	-1.2	0.1	28.0	33.0	3.0	-4.9	2.6	0.7	-0.3	-0.9	-1.9
tattoo: HSF 5H		2	acc	63	86	75	56	2	41	40	10	10	12	17
HANOVER KODIAK 24K		%wb	49	78	4	49		2	8	96	32	67	62	67
reg: [CAN]R15538	Bdate: 20000208	74	BIO EPD	-1.6	-0.7	15.0	38.0	5.0	-6.7	8.9	1.0	-0.3	-1.0	-1.2
tattoo: HSF 24K		2	acc	80	94	88	77	1	51	51	60	60	65	74
HANOVER SPECIAL 25D		%wb	27	56	77	88		16	67	94	10	50	47	66
reg: R 10295	Bdate: 19940202	185	BIO EPD	-3.1	0.6	36.0	61.0	55.0	-3.0	18.1	0.9	-0.4	-1.0	-1.4
tattoo: HSF 25D		11	acc	91	97	95	90	6	75	81	63	63	67	71
HARKDALE CEEBEE GAMEBOY 20G		%wb	89	73	73	40		99	99					
reg: R 13318	Bdate: 19970201	18	BIO EPD	1.4	-0.4	35.0	35.0	16.0	6.4	30.0				
tattoo: GSH 20G		1	acc	67	80	40	36	4	50	50				
HARKDALE HIGH ROLLER 17H		%wb	53	35	92	81		32	88	90	7	58	34	15
reg: R 14765	Bdate: 19980201	137	BIO EPD	-1.4	1.7	43.0	54.0	6.0	-1.4	22.5	0.9	-0.4	-1.0	-1.5
tattoo: GSH 17H		2	acc	87	96	92	80	2	50	38	45	45	60	70
HARMONIEUX		%wb	13	39	41	72		2	2			82	24	65
reg: R 15	Bdate: 19720224	52	BIO EPD	-4.3	1.5	28.0	48.0	22.0	-6.1	5.6		-0.9	-1.7	-0.1
tattoo: GAS 4D		14	acc	81	93	81	76	11	81	79		25	33	31
HCN DUNDEE 02D		%wb	51	18	85	77		81	96					
reg: R 9434	Bdate: 19940130	43	BIO EPD	-1.5	2.8	40.0	51.0	33.0	2.2	26.9				
tattoo: HCN 02D		2	acc	72	90	79	64	6	60	69				
HCN EASTWOOD 2E		%wb	92	75	51	44		87	83					
reg: R 12077	Bdate: 19950123	19	BIO EPD	1.9	-0.5	30.0	36.0	6.0	3.0	21.1				
tattoo: HCN 2E		2	acc	59	83	37	35	1	42	35				
HEARTWOODS DUKE OF BEEF 41D		%wb	10	11	86	96		1	3	94	72	4	98	99
reg: R 12530	Bdate: 19940423	57	BIO EPD	-4.8	3.5	40.0	76.0	21.0	-7.4	6.5	0.9	-0.3	-1.3	0.7
tattoo: MAU 41D		1	acc	77	92	87	78	1	59	63	51	12	59	69
HEARTWOODS DYNAMITE 9D		%wb	60	63	8	15		18	5	99	27	8	16	81
reg: R 12529	Bdate: 19940220	127	BIO EPD	-1.0	0.2	18.0	24.0	29.0	-2.7	7.8	1.3	-0.3	-1.3	-1.9
tattoo: MAU 9D		1	acc	88	96	94	88	2	67	69	69	59	74	82
HEARTWOODS EYE CATCHER 10E		%wb	6	3	93	94		18	87	99	4	82	94	97
reg: R 12531	Bdate: 19950214	105	BIO EPD	-5.8	4.8	44.0	70.0	55.0	-2.7	22.2	1.6	-0.5	-0.9	-0.2
tattoo: MAU 10E		14	acc	87	96	91	87	3	72	78	57	37	64	74

PROVEN sires (> 15 calves sired)		Prog		GProg				Mat.							
(Evaluated 2008-02-08)		Herds	CE	BW	WG	YG	Herds	CE	Milk	REA	IMF	BFAT	SC	HT	
HEARTWOODS GOLDEN EYE 43G	%wb		19	30	64	75		19	92						
reg: R 14035 Bdate: 19970328	BIO EPD	51	-3.6	2.0	32.0	50.0	4.0	-2.6	24.0						
tattoo: MAU 43G	acc	1	74	92	87	71	1	47	47						
HEARTWOODS KAISER 56K	%wb		98	98	78	76		76	62	99	27	73	66	88	
reg: [CAN]R16084 Bdate: 20000415	BIO EPD	74	4.0	-4.1	37.0	50.0	4.0	1.8	17.5	1.2	-0.3	-0.9	-1.1	0.3	
tattoo: MAU 56K	acc	2	84	83	90	87	1	51	47	59	58	64	74	72	
HEARTWOODS LONE STAR 16L	%wb		80	87	83	68		90	87	92	93	70	91	93	
reg: [CAN]D12508 Bdate: 20010323	BIO EPD	22	0.5	-1.5	38.0	46.0	0.0	3.4	22.1	0.9	-0.2	-1.0	-0.4	0.4	
tattoo: MAU 16L	acc	1	62	84	53	54	0	38	36	49	49	54	65	62	
HEARTWOODS MAXIMIZER 74M	%wb		99	98	8	12		89	82	95	76	45	38	20	
reg: [CAN]D13056 Bdate: 20020422	BIO EPD	24	6.0	-4.6	18.0	22.0	0.0	3.3	20.8	1.0	-0.3	-1.1	-1.4	-0.4	
tattoo: MAU 74M	acc	1	61	84	70	62	0	31	27	45	44	50	63	60	
HEARTWOODS MIGHTY MOE 88M	%wb		14	43	20	61		15	39	51	13	48	55	76	
reg: [CAN]R16750 Bdate: 20020521	BIO EPD	42	-4.2	1.3	22.0	43.0	0.0	-3.1	14.6	0.4	-0.4	-1.0	-1.2	0.0	
tattoo: MAU 88M	acc	1	70	90	71	62	0	35	24	46	46	52	63	63	
HIGH POINT KOBE 25K	%wb		10	55	55	17		19	39	22	93	39	4	14	
reg: [CAN]R15990 Bdate: 20000418	BIO EPD	45	-4.8	0.7	30.0	25.0	1.0	-2.6	14.6	0.2	-0.2	-1.1	-2.6	-0.5	
tattoo: CHA 25K	acc	2	71	90	57	51	1	37	17	26	26	41	51	49	
HUSSARD 1D	%wb		67	41	76	47		67	2	90	46	45	17	30	
reg: R 12 Bdate: 19720204	BIO EPD	65	-0.5	1.4	36.0	37.0	99.0	1.0	6.0	0.8	-0.3	-1.1	-1.9	-0.2	
tattoo: CIA 1D	acc	25	81	93	86	81	20	78	83	11	11	42	51	50	
IMP BRADBURY EVAN 7394	%wb		73	30	84	95		16	54						
reg: R 7394 Bdate: 19890101	BIO EPD	23	-0.1	2.0	39.0	73.0	18.0	-3.0	16.4						
tattoo: IMP 7394Y	acc	9	61	83	55	48	5	50	54						
IMP HADLEY HANK 1MP 9686	%wb		25	14	79	79		44	30	73	75	5	4	30	
reg: R 9686 Bdate: 19920606	BIO EPD	22	-3.2	3.2	37.0	52.0	5.0	-0.5	13.4	0.6	-0.3	-1.3	-2.6	-0.2	
tattoo: IMP 9686B	acc	11	60	82	52	49	2	36	31	20	12	32	41	38	
IMP KILBOY FRANK 1325Z	%wb		69	59	10	8		61	34			96	52	92	
reg: R 13251 Bdate: 19900220	BIO EPD	20	-0.4	0.4	19.0	18.0	2.0	0.6	13.9			-0.6	-1.3	0.4	
tattoo: IMP 1325Z	acc	4	50	78	59	47	1	23	15			36	46	44	
IMP RAVENSWORTH ULAN 3209R	%wb		4	11	2	2		51	56	93	86	13	47	77	
reg: R 3209 Bdate: 19831211	BIO EPD	64	-6.4	3.5	13.0	10.0	21.0	-0.1	16.6	0.9	-0.2	-1.2	-1.4	0.0	
tattoo: IMP 3209R	acc	11	77	92	81	77	3	53	47	21	12	75	81	80	
JA POP 20Y	%wb		54	63	77	84		55	75	65	29	49	76	97	
reg: R 5038 Bdate: 19890316	BIO EPD	386	-1.3	0.2	36.0	56.0	188.0	0.2	19.5	0.5	-0.3	-1.0	-0.9	0.6	
JA THE BOMBER 6T	%wb		53	43	92	91		1	2			61	91	87	
reg: R 3341 Bdate: 19850510	BIO EPD	460	-1.4	1.3	43.0	65.0	154.0	-9.2	5.8			-1.0	-0.4	0.3	
tattoo: JA 6T	acc	56	96	99	98	96	34	90	91			93	95	95	
JAC MAR YAIZU 32Y	%wb		98	96	53	61		88	38			98	1	68	
reg: R 5091 Bdate: 19890309	BIO EPD	125	3.8	-2.9	30.0	43.0	1.0	3.1	14.4			-0.6	-3.3	0.0	
tattoo: JMR 32Y	acc	1	89	96	86	72	1	77	30			55	65	63	
JCB BEATTY 6B	%wb		88	72	4	21		54	8						
reg: R 8095 Bdate: 19920306	BIO EPD	17	1.3	-0.3	15.0	27.0	15.0	0.1	9.0						
tattoo: JCB 6B	acc	1	57	81	38	33	2	47	50						
JOCKA HOUBLON 10H	%wb		49	32	13	6		27	6						
reg: R 14148 Bdate: 19980511	BIO EPD	24	-1.6	1.9	20.0	16.0	1.0	-1.8	8.0						
tattoo: JOJM 10H	acc	1	63	84	64	47	1	31	22						
JOLI KING 41K	%wb		65	15	33	43		39	51	56	97	83	32	7	
reg: [CAN]R16458 Bdate: 20000224	BIO EPD	34	-0.7	3.1	26.0	36.0	0.0	-0.9	16.0	0.5	-0.1	-0.9	-1.6	-0.7	
tattoo: JOLI 41K	acc	2	67	88	55	46	0	32	24	10	10	29	38	36	
LAKE VIEW YOKUM 14Y	%wb		98	93	18	7		68	96	88		34	96	63	
reg: R 5183 Bdate: 19890202	BIO EPD	40	4.3	-2.3	22.0	17.0	19.0	1.1	27.0	0.8		-1.1	-0.2	-0.1	
tattoo: GLD 14Y	acc	20	73	90	74	70	5	63	63	33		54	63	61	
LAMB CAPITAINE 36C	%wb		98	96	1	1		91	98						
reg: R 9724 Bdate: 19930102	BIO EPD	96	4.2	-3.0	4.0	-4.0	21.0	3.5	28.9						
tattoo: LAMB 36C	acc	2	82	94	86	59	4	67	64						
LAMB GASTON 3G	%wb		75	35	69	57		35	1			93	77	89	
reg: R 13367 Bdate: 19970114	BIO EPD	16	0.0	1.7	34.0	41.0	4.0	-1.2	4.6			-0.7	-0.9	0.3	
tattoo: LAMB 3G	acc	2	54	80	67	59	1	39	41			52	64	62	

PROVEN sires (> 15 calves sired) (Evaluated 2008-02-08)	Prog		GProg				Mat.						
	Herds	CE	BW	WG	YG	Herds	CE	Milk	REA	IMF	BFAT	SC	HT
LAMB JUSTY 7M	%wb	86	89	2	1		95	94			71	87	54
reg: [CAN]R16786 Bdate: 20020213	17	BIO EPD	1.1	-1.7	11.0	-16.0	0.0	4.6	24.8		-1.0	-0.6	-0.2
tattoo: LAMB 7M	2	acc	61	80	42	45	0	32	27		46	60	57
LAVELAINES MISTER FARLEY 45F	%wb	93	94	5	5		97	98	1	17	68	72	22
reg: R 13231 Bdate: 19960417	38	BIO EPD	2.1	-2.4	16.0	14.0	23.0	5.4	28.4	-0.4	-0.4	-1.0	-0.3
tattoo: LEM 45F	5	acc	68	89	64	52	3	52	55	26	26	30	37
LAVELAINES MR DILLINGER 11D	%wb	92	72	5	1		87	45	18	78	87	73	84
reg: R 10330 Bdate: 19940401	17	BIO EPD	2.0	-0.3	16.0	5.0	3.0	2.9	15.2	0.2	-0.3	-0.8	-0.9
tattoo: LEM 11D	3	acc	61	83	46	43	1	40	32	20	20	23	30
LEB HECTOR BUR JO 10H	%wb	9	37	17	35		30	37	93	34	64	12	
reg: R 340 Bdate: 19760402	38	BIO EPD	-5.0	1.6	21.0	33.0	35.0	-1.6	14.2	0.9	-0.3	-1.0	-2.1
tattoo: LEB 10H	6	acc	70	89	77	74	5	67	71	36	36	40	41
LIAHN 85Z	%wb	54	59	40	82		4	5			24	9	19
reg: R 7334 Bdate: 19900405	48	BIO EPD	-1.3	0.4	27.0	54.0	3.0	-5.2	7.7		-1.1	-2.2	-0.4
tattoo: JA 85Z	2	acc	74	91	86	77	1	45	43		54	65	63
LIAHN CHARLIE BROWN 80C	%wb	56	63	86	56		87	91					
reg: R 9201 Bdate: 19930208	50	BIO EPD	-1.2	0.2	40.0	41.0	11.0	2.9	23.4				
tattoo: JA 80C	14	acc	77	91	65	55	4	61	59				
LIAHN CIRBY 211C	%wb	75	59	85	91		92	92			14	76	92
reg: R 9825 Bdate: 19930201	22	BIO EPD	0.0	0.4	40.0	64.0	25.0	3.9	23.9		-1.2	-0.9	0.4
tattoo: JA 211C	1	acc	65	85	58	58	1	54	58		58	68	66
LIAHN FERDINAND 6114F	%wb	34	14	83	62		57	73	99	24	72	13	98
reg: R 13075 Bdate: 19960321	62	BIO EPD	-2.5	3.2	39.0	43.0	13.0	0.3	19.1	1.2	-0.3	-1.0	-2.1
tattoo: JA 6114F	1	acc	78	93	88	78	2	60	62	48	48	66	74
LIAHN FIVE PLUS 61F	%wb	31	20	99	99		54	80	98	53	15	28	97
reg: R 13073 Bdate: 19960101	18	BIO EPD	-2.7	2.7	54.0	93.0	0.0	0.1	20.5	1.1	-0.3	-1.2	-1.6
tattoo: JA 61F	2	acc	61	83	74	69	0	42	39	57	56	63	70
LIAHN POLL CAT	%wb	13	45	73	89		6	7	53	90	67	25	81
reg: D 6041 Bdate: 19930101	623	BIO EPD	-4.3	1.2	35.0	62.0	148.0	-4.4	8.3	0.5	-0.2	-1.0	-1.7
tattoo: JA 31C	122	acc	97	99	98	95	34	87	90	91	90	93	95
LIAHN POLLED FREDDY 655F	%wb	46	72	33	78		30	1	45	9	7	30	59
reg: C 20668 Bdate: 19960131	177	BIO EPD	-1.8	-0.3	26.0	51.0	43.0	-1.6	2.5	0.4	-0.4	-1.3	-1.6
tattoo: JA 655F	1	acc	90	97	95	80	1	72	77	55	54	60	70
MAEBARBS WILLY 51X	%wb	5	2	73	87		53	95					
reg: R 4742 Bdate: 19880203	42	BIO EPD	-6.0	5.5	35.0	60.0	31.0	0.0	25.6				
tattoo: GAS 51X	7	acc	69	89	29	28	9	61	58				
MAL LAR NATHAN 2N	%wb	9	23	12	31		16	51	70	6	44	19	14
reg: [CAN]R16981 Bdate: 20030115	41	BIO EPD	-5.0	2.5	20.0	31.0	0.0	-2.9	16.0	0.6	-0.4	-1.1	-1.8
tattoo: MAL 2N	2	acc	70	90	72	61	0	36	29	45	45	51	63
MALRAMS MISTER CODY 1C	%wb	27	28	20	10		44	4					
reg: R 9361 Bdate: 19930514	51	BIO EPD	-3.1	2.1	22.0	20.0	1.0	-0.5	7.1				
tattoo: MRF 1C	2	acc	74	91	38	35	1	56	34				
MAPLE BROOK PEDRO 101Y	%wb	16	3	87	85		1	3	99		94	14	82
reg: R 6266 Bdate: 19891104	281	BIO EPD	-3.9	5.1	40.0	58.0	103.0	-12.7	6.5	1.3	-0.7	-2.0	0.1
tattoo: MBR 101Y	19	acc	93	98	96	94	12	83	87	69	73	81	70
MAPLE CREST SUPREME 1B	%wb	7	35	49	71		57	91	86	36	15	28	96
reg: R 7268 Bdate: 19920104	262	BIO EPD	-5.3	1.7	29.0	47.0	99.0	0.3	23.6	0.8	-0.3	-1.2	-1.6
tattoo: MCF 1B	71	acc	93	98	95	85	15	82	84	41	26	46	54
MAPLE RIDGE TROJAN 3P	%wb	60	39	54	73		1	1			29	89	83
reg: R 1807 Bdate: 19820727	44	BIO EPD	-1.0	1.5	30.0	48.0	44.0	-11.7	-6.4		-1.1	-0.5	0.1
tattoo: MR 3P	4	acc	76	90	84	82	2	66	72		24	30	32
MAPLE VALLEY SIR EMINENT 28G	%wb	54	58	90	75		96	95	97	72	63	86	89
reg: R 13333 Bdate: 19970430	172	BIO EPD	-1.3	0.5	42.0	49.0	26.0	4.8	25.7	1.1	-0.3	-1.0	-0.6
tattoo: MVF 28G	2	acc	90	97	95	89	2	68	71	83	83	85	90
MARMAC FERGIE 16H	%wb	6	12	4	5		16	1	75	6	42	24	68
reg: R 14053 Bdate: 19980520	25	BIO EPD	-5.6	3.4	15.0	15.0	7.0	-2.9	2.4	0.7	-0.4	-1.1	-1.7
tattoo: MAC 16H	1	acc	64	86	79	74	2	44	49	41	41	45	53

PROVEN sires (> 15 calves sired)		Prog		GProg				Mat.							
(Evaluated 2006-02-08)		Herds	CE	BW	WG	YG	Herds	CE	Milk	REA	IMF	BFAT	SC	HT	
MARMACS CAGNEY 27C	%wb	8	34	74	62		34	30	99	11	70	47	66		
reg: R 9021 Bdate: 19930530	BIO EPD	-5.2	1.8	36.0	43.0	5.0	-1.3	13.3	1.1	-0.4	-1.0	-1.4	0.0		
tattoo: MARM 27C	acc	84	94	87	82	3	62	59	48	31	68	77	76		
MARMACS MISTER COLOSSAL 9Y	%wb	78	79	3	1		98	85			87	20	10		
reg: R 5068 Bdate: 19890625	BIO EPD	0.3	-0.8	13.0	4.0	59.0	5.8	21.7			-0.8	-1.8	-0.6		
tattoo: MARM 9Y	acc	75	92	86	86	10	72	79			52	64	62		
MARMACS MR CLAUDE 10X	%wb	58	70	20	23		65	7	17	93	73	72	23		
reg: R 4266 Bdate: 19880622	BIO EPD	-1.1	-0.2	22.0	28.0	37.0	0.9	8.3	0.1	-0.2	-0.9	-1.0	-0.3		
tattoo: MARM 10X	acc	89	96	93	87	9	77	77	49	42	79	84	84		
MAU ATLAS 8A	%wb	48	24	23	45		32	90			8	65	99		
reg: R 7910 Bdate: 19910328	BIO EPD	-1.7	2.4	23.0	37.0	17.0	-1.4	23.1			-1.3	-1.1	0.9		
tattoo: MAU 8A	acc	74	91	85	70	1	51	53			53	65	62		
MLR HERC 7H	%wb	40	76	1	1		84	4							
reg: R 14197 Bdate: 19980501	BIO EPD	-2.1	-0.6	-1.0	7.0	39.0	2.6	7.2							
tattoo: MLR 7H	acc	73	90	80	57	1	57	68							
MNJ ZEUSS 2Z	%wb	13	4	39	46		97	97							
reg: R 6457 Bdate: 19900222	BIO EPD	-4.3	4.5	27.0	37.0	56.0	5.3	27.5							
tattoo: MNJ 2Z	acc	79	84	88	82	5	66	73							
MVF CRACKER JACK 80E	%wb	33	43	1	1		35	1	98	54	74	85	97		
reg: R 12602 Bdate: 19950516	BIO EPD	-2.6	1.3	8.0	-1.0	7.0	-1.2	2.9	1.1	-0.3	-0.9	-0.7	0.7		
tattoo: MVF 80E	acc	76	92	71	69	2	50	48	60	60	64	69	68		
MVF GRANDEUR 04G	%wb	25	25	8	22		16	1							
reg: R 13248 Bdate: 19970405	BIO EPD	-3.2	2.3	18.0	28.0	0.0	-3.0	1.7							
tattoo: MVF 04G	acc	68	87	38	35	0	39	33							
MVF SUPER COOL 12F	%wb	21	34	81	93		15	16	83	16	12	50	99		
reg: R 13124 Bdate: 19960103	BIO EPD	-3.5	1.8	38.0	68.0	1.0	-3.1	11.0	0.7	-0.4	-1.2	-1.3	0.8		
tattoo: MVF 12F	acc	72	90	56	57	1	43	35	41	41	45	55	54		
NAJ GALANTE 10W	%wb	12	11	31	15		81	82	96		88	76	97		
reg: R 4687 Bdate: 19870403	BIO EPD	-4.5	3.5	25.0	24.0	28.0	2.3	20.8	1.0		-0.8	-0.9	0.6		
tattoo: NAJ 10W	acc	83	94	86	81	9	72	71	29		53	58	68		
RHEO LADIES MAN 18L	%wb	65	49	99	99		26	22	98	3	1	91	99		
reg: [CAN]D12487 Bdate: 20010220	BIO EPD	-0.7	1.0	67.0	110.0	7.0	-1.9	12.0	1.1	-0.5	-1.6	-0.4	0.8		
tattoo: RHEO 18L	acc	67	88	79	70	3	45	51	57	56	62	66	70		
RHEO LANCASTER 113L	%wb	98	96	99	96		38	14	39	67	37	95	96		
reg: [CAN]R16923 Bdate: 20010305	BIO EPD	4.1	-3.0	54.0	74.0	1.0	-1.0	10.6	0.3	-0.3	-1.1	-0.2	0.6		
tattoo: RHEO 113L	acc	60	84	71	66	1	35	36	58	57	63	67	71		
RIT EMPIRE 42E	%wb	93	94	22	14		78	27							
reg: R 11396 Bdate: 19950413	BIO EPD	2.1	-2.4	23.0	24.0	5.0	1.9	12.8							
tattoo: RIT 42E	acc	74	83	71	45	1	51	37							
RIT FRISSON 52F	%wb	92	93	36	63		80	15			50	10	84		
reg: R 12288 Bdate: 19960330	BIO EPD	2.0	-2.3	26.0	44.0	30.0	2.1	10.8			-1.0	-2.2	0.1		
tattoo: RIT 52F	acc	80	94	84	79	1	58	64			61	72	70		
RIT GUS 66G	%wb	98	98	48	27		87	50			89	61	92		
reg: R 13229 Bdate: 19970422	BIO EPD	4.0	-4.0	29.0	30.0	0.0	3.0	15.8			-0.8	-1.2	0.4		
tattoo: RIT 66G	acc	61	85	73	61	0	34	18			47	61	58		
ROSENEATH 22W	%wb	90	72	1	37		69	1	96	3	1	64	11		
reg: R 3800 Bdate: 19870401	BIO EPD	1.6	-0.3	11.0	34.0	36.0	1.2	3.0	1.0	-0.5	-1.5	-1.1	-0.6		
tattoo: APB 22W	acc	82	93	87	79	3	75	77	13	12	56	65	64		
ROSENEATH AUSTIN WRB 10A	%wb	72	67	71	85		99	97							
reg: R 7671 Bdate: 19910305	BIO EPD	-0.2	0.0	34.0	58.0	20.0	7.2	27.4							
tattoo: WRB 10A	acc	73	91	48	45	4	58	60							
ROSENEATH BERKELEY 88B	%wb	75	68	23	78		63	86	43	93	89	91	96		
reg: D 5274 Bdate: 19920811	BIO EPD	0.0	-0.1	23.0	51.0	20.0	0.7	21.9	0.4	-0.2	-0.8	-0.5	0.6		
tattoo: WRB 88B	acc	59	83	71	71	5	46	54	44	35	65	72	75		
ROSENEATH CELEBRATION 48C	%wb	66	76	54	77		94	98	92		4	95	90		
reg: R 10164 Bdate: 19930321	BIO EPD	-0.6	-0.6	30.0	51.0	9.0	4.3	28.3	0.9		-1.3	-0.2	0.3		
tattoo: WRB 48C	acc	60	82	65	60	2	47	47	13		15	21	20		

PROVEN sires (> 15 calves sired) (Evaluated 2008-02-08)		Prog	CE	BW	WG	YG	GProg	Mat.	REA	IMF	BFAT	SC	HT		
		Herds					Herds	CE	Milk						
ROSENEATH EMERSON 30E	%wb		53	59	58	85		9	45	99	64	55	88	90	
reg: R 12037	Bdate: 19950211	18	BIO EPD	-1.4	0.4	31.0	58.0	0.0	-3.9	15.2	1.2	-0.3	-1.0	-0.6	0.3
tattoo: WRB 30E		1	acc	62	84	68	68	0	46	45	56	31	61	72	69
ROSENEATH JUPITER WRB 59J	%wb		58	37	94	90		27	53	90	1	1	98	97	
reg: R 15351	Bdate: 19990409	50	BIO EPD	-1.1	1.6	45.0	63.0	7.0	-1.8	16.2	0.9	-0.5	-1.5	0.8	0.6
tattoo: WRB 59J		2	acc	74	91	84	73	2	48	50	52	52	56	51	61
ROSENEATH WILLIAM 4W	%wb		87	81	64	89		99	99	92	2	1	65	84	
reg: R 3791	Bdate: 19870215	173	BIO EPD	1.2	-0.9	32.0	62.0	150.0	7.9	31.9	0.9	-0.5	-1.5	-1.1	0.1
tattoo: APB 4W		31	acc	91	97	93	90	13	86	90	50	28	64	69	72
ROSENEATH ZENITH 1Z	%wb		5	1	33	74		73	77	64		94	56		
reg: R 6629	Bdate: 19900115	71	BIO EPD	-6.1	7.5	26.0	49.0	50.0	1.5	19.8	0.5		-0.7	-1.2	
tattoo: APB 1Z		5	acc	80	94	85	83	4	69	76	42		47	57	
ROUND VALLEY 10B	%wb		84	65	4	18		4	9	16	91	38	7		
reg: D 4921	Bdate: 19920402	88	BIO EPD	0.8	0.1	15.0	26.0	13.0	-5.2	9.2	0.1	-0.2	-1.1	-2.3	
tattoo: FBH 10B		14	acc	82	95	88	86	6	60	57	37	37	41	51	
ROYAL BATMAN 21B	%wb		53	23	99	98		76	98	87	94	63	24	95	
reg: R 7898	Bdate: 19920201	62	BIO EPD	-1.4	2.5	56.0	82.0	50.0	1.8	29.5	0.8	-0.2	-1.0	-1.7	0.5
tattoo: SED 21B		5	acc	77	93	87	81	3	67	76	52	52	57	64	65
ROYAL TRADITION TWO 5B	%wb		39	12	48	32		75	89	65	82	49	9	19	
reg: R 7895	Bdate: 19920107	58	BIO EPD	-2.2	3.3	29.0	32.0	26.0	1.7	23.0	0.5	-0.2	-1.0	-2.3	-0.4
tattoo: SED 5B		9	acc	79	92	82	71	6	69	67	14	14	16	22	18
RTF ELIJAH 14E	%wb		66	78	16	36		61	46	84	18	61	42	55	
reg: R 11134	Bdate: 19950301	27	BIO EPD	-0.6	-0.7	21.0	34.0	7.0	0.6	15.3	0.7	-0.4	-1.0	-1.4	-0.1
tattoo: RTF 14E		2	acc	64	86	76	70	2	46	45	39	39	48	62	59
SANDBROOK VINCENT 440S	%wb		27	23	71	71		8	1	96	47	26	41	88	
reg: R 2255	Bdate: 19840314	193	BIO EPD	-3.1	2.5	34.0	47.0	93.0	-4.1	0.1	1.0	-0.3	-1.1	-1.4	0.3
tattoo: GEL 440S		42	acc	92	97	91	89	17	85	85	51	46	83	86	87
SANDGAARDS BLUE JAY 1X	%wb		91	96	5	11		72	62	8	86	78	62	13	
reg: R 4362	Bdate: 19880315	241	BIO EPD	1.8	-2.9	16.0	22.0	43.0	1.4	17.4	0.0	-0.2	-0.9	-1.2	-0.6
tattoo: PMS 1X		60	acc	92	98	95	85	13	77	78	49	45	58	58	67
SANDY TOWN METHUSELAH 1M	%wb		8	7	99	99		57	59	98	24	60	92	84	
reg: [CAN]D13207	Bdate: 20020122	102	BIO EPD	-5.2	4.0	56.0	89.0	11.0	0.3	17.0	1.1	-0.3	-1.0	-0.4	0.1
tattoo: STC 1M		1	acc	83	95	92	79	1	48	55	61	61	66	76	74
SHOWCASE CURIOUS GEORGE 321E	%wb		72	65	11	17		44	31			77	88	75	
reg: D 8149	Bdate: 19950321	29	BIO EPD	-0.2	0.1	19.0	25.0	15.0	-0.5	13.5			-0.9	-0.6	0.0
tattoo: CDAO 321E		1	acc	62	85	45	38	1	46	49			14	19	18
SJF Patsy 9P	%wb		69	68	49	44		68	5						
reg: Bdate: 20040412		16	BIO EPD	-0.4	-0.1	29.0	36.0	0.0	1.1	7.9					
tattoo: SJF 9P		1	acc	53	79	66	47	0	37	37					
SPITZEE PAPIILLON 2P	%wb		4	15	27	32		2	19			60	38	30	
reg: R 1569	Bdate: 19820504	31	BIO EPD	-6.4	3.1	24.0	32.0	9.0	-6.7	11.6			-1.0	-1.4	-0.2
tattoo: KAW 2P		6	acc	61	85	24	28	4	52	40			22	30	28
SPRUCE VIEW HERBIE SV 3H	%wb		98	98	21	5		97	6	71	91	47	13	22	
reg: R 14540	Bdate: 19980509	65	BIO EPD	3.8	-4.4	23.0	15.0	16.0	5.1	8.2	0.6	-0.2	-1.0	-2.0	-0.3
tattoo: SV 3H		3	acc	77	92	85	81	2	58	61	31	31	60	69	68
SUNDANCE DICK TRACY 38D	%wb		61	73	3	9		97	98						
reg: D 6739	Bdate: 19940314	46	BIO EPD	-0.9	-0.4	14.0	20.0	6.0	5.4	29.2					
tattoo: SVR 38D		2	acc	73	90	78	74	3	50	43					
SUNDANCE LONDON 28L	%wb		51	25	67	64		40	92	42	68	50	36	32	
reg: [CAN]D12568	Bdate: 20010304	67	BIO EPD	-1.5	2.3	33.0	44.0	6.0	-0.8	24.1	0.4	-0.3	-1.0	-1.5	-0.2
tattoo: SVR 28L		1	acc	76	93	87	57	1	41	35	10	10	12	17	16
SUNDANCE MICRO 44M	%wb		88	93	19	22		75	53						
reg: [CAN]D13287	Bdate: 2002041C	26	BIO EPD	1.3	-2.2	22.0	28.0	0.0	1.7	16.3					
tattoo: SVR 44M		1	acc	57	80	15	13	0	25	11					
SUNDANCE ZEPHYR 43Z	%wb		46	61	5	14		60	98	90	79	87	70	64	
reg: R 6050	Bdate: 19900314	91	BIO EPD	-1.8	0.3	16.0	24.0	17.0	0.5	28.9	0.9	-0.3	-0.8	-1.0	-0.1
tattoo: SVR 43Z		30	acc	85	95	81	74	11	69	64	37	31	45	45	54

PROVEN sires (> 15 calves sired) (Evaluated 2008-02-08)		Prog		GProg				Mat.							
		Herds		CE	BW	WG	YG	Herds	CE	Milk	REA	IMF	BFAT	SC	HT
T-4 HIRIAM 22H			%wb	11	18	30	26		49	7					
reg: D 11433	Bdate: 19980405	27	BIO EPD	-4.6	2.8	25.0	30.0	3.0	-0.2	8.4					
tattoo: WWP 22H		1	acc	62	86	76	50	1	38	31					
T4 HARLEY 16H			%wb	10	1	1	4		53	52					
reg: R 14963	Bdate: 19980401	25	BIO EPD	-4.8	6.1	10.0	13.0	0.0	0.0	16.1					
tattoo: WWP 16H		2	acc	61	85	74	50	0	34	19					
TOP NATURS TOPPER 011C			%wb	87	87	13	14		29	13	14	86	98	91	66
reg: D 7780	Bdate: 19930410	352	BIO EPD	1.2	-1.5	20.0	24.0	63.0	-1.7	10.4	0.1	-0.2	-0.6	-0.4	0.0
tattoo: TOP 011C		91	acc	94	98	97	88	16	75	79	45	45	53	56	58
TRIPL C ISAAC 28W			%wb	1	1	18	20		35	13			98	17	89
reg: R 3881	Bdate: 19870317	42	BIO EPD	-9.1	7.1	22.0	27.0	12.0	-1.2	10.4			-0.6	-1.9	0.3
tattoo: JC 28W		5	acc	76	90	76	74	3	69	64			62	70	69
TRIPLE C CHANCELLOR 70U			%wb	76	56	23	47		30	49	43	21	21	12	78
reg: R 3424	Bdate: 19860407	146	BIO EPD	0.2	0.6	23.0	38.0	54.0	-1.6	15.7	0.4	-0.4	-1.2	-2.1	0.0
tattoo: JC 70U		29	acc	89	96	80	78	13	83	78	25	24	56	64	60
TRIPLE C CRAFTSMAN 575H			%wb	66	76	92	78		30	35					
reg: D 9997	Bdate: 19980324	23	BIO EPD	-0.6	-0.6	43.0	51.0	1.0	-1.6	14.0					
tattoo: JC 575H		3	acc	62	85	42	34	1	37	27					
TRIPLE C EVADER 57R			%wb	94	55	33	16		2	1			21	50	25
reg: R 2065	Bdate: 19830301	95	BIO EPD	2.5	0.7	26.0	24.0	72.0	-6.2	0.8			-1.2	-1.3	-0.3
tattoo: JC 57R		8	acc	83	94	83	78	15	79	81			16	21	21
TRIPLE C HERCULES 296F			%wb	56	65	88	88		5	28					
reg: D 9324	Bdate: 19960402	53	BIO EPD	-1.2	0.1	41.0	61.0	25.0	-4.7	13.1					
tattoo: JC 296F		2	acc	75	91	56	55	4	60	60					
TRIPLE C INVICTUS 292A			%wb	11	35	63	66		10	25	63	60	43	22	
reg: R 6714	Bdate: 19910125	119	BIO EPD	-4.6	1.7	32.0	45.0	20.0	-3.7	12.6	0.5	-0.3	-1.1	-1.7	
tattoo: JC 292A		14	acc	86	96	76	67	7	65	59	27	27	31	40	
TRIPLE C POUNDMAKER 392B			%wb	63	39	4	4		7	1					
reg: D 4640	Bdate: 19920126	34	BIO EPD	-0.8	1.5	15.0	13.0	7.0	-4.2	1.8					
tattoo: JC 392B		2	acc	69	88	69	49	3	56	51					
VAN ALTA HANK 29E			%wb	40	41	71	70		69	31					
reg: R 11896	Bdate: 19950413	29	BIO EPD	-2.1	1.4	34.0	47.0	2.0	1.2	13.5					
tattoo: PVT 29E		1	acc	64	87	25	24	2	39	32					
VAN ALTA LES 7A			%wb	60	65	13	20		54	4					
reg: R 7034	Bdate: 19910217	18	BIO EPD	-1.0	0.1	20.0	27.0	3.0	0.1	7.4					
tattoo: PVT 7A		1	acc	59	83	26	23	1	46	29					
VAN ALTA LONESTAR 32F			%wb	3	1	59	77		1	1					
reg: R 12969	Bdate: 19960430	21	BIO EPD	-7.0	6.4	31.0	51.0	0.0	-8.1	0.4					
tattoo: PVT 32F		2	acc	60	83	28	27	0	36	21					
VAN ALTA LUCKY BOY PVT 167S			%wb	19	58	75	70		4	1			91	20	85
reg: R 2252	Bdate: 19840401	71	BIO EPD	-3.6	0.5	36.0	47.0	25.0	-5.0	-3.4			-0.8	-1.8	0.2
tattoo: PVT 167S		13	acc	81	93	67	58	7	75	63			15	20	19
VAN ALTA MAVERICK 1D			%wb	2	1	52	78		1	1					
reg: R 11053	Bdate: 19940117	40	BIO EPD	-7.6	6.4	30.0	52.0	12.0	-11.5	-3.6					
tattoo: PVT 1D		7	acc	79	90	81	79	3	63	56					
VAN ALTA ROYCE 20Z			%wb	33	39	33	22		51	1					
reg: D 3145	Bdate: 19900323	63	BIO EPD	-2.6	1.5	26.0	28.0	44.0	-0.1	0.8					
tattoo: PVT 20Z		10	acc	79	93	58	52	8	70	67					
VAUPRE NIKE 3N TWIN			%wb	25	30	16	21		68	32					
reg: [CAN]R16944	Bdate: 20030417	15	BIO EPD	-3.2	2.0	21.0	27.0	0.0	1.1	13.6					
tattoo: VAUP 3N		1	acc	50	80	59	41	0	25	17					
VOB OK NORTHERN JUSTIN			%wb	5	7	76	90		3	98	96	85	40	97	62
reg: R 1146	Bdate: 19800125	144	BIO EPD	-6.0	4.0	36.0	64.0	143.0	-5.4	29.7	1.0	-0.2	-1.1	0.0	-0.1
tattoo: VOB 1M		25	acc	90	97	90	86	20	88	89	19	16	55	63	63
VOY SHERIF 1S			%wb	81	79	41	35		68	30			94	2	23
reg: R 2428	Bdate: 19840330	101	BIO EPD	0.6	-0.8	28.0	33.0	87.0	1.1	13.4			-0.7	-2.8	-0.3
tattoo: VOY 1S		17	acc	83	95	79	68	10	79	81			35	45	43

PROVEN sires (> 15 calves sired) (Evaluated 2008-02-08)		Prog	CE	BW	WG	YG	GProg	Mat.	Milk	REA	IMF	BFAT	SC	HT
		Herds					Herds	CE						
WEST WINDS EASY RIDER 12E	%wb	15	55	1	4			53	39					
reg: R 11363 Bdate: 19950114	BIO EPD	-4.1	0.7	9.0	12.0	22.0	0.0	14.6						
tattoo: SMB 12E	acc	58	84	63	60	3	49	57						
WEST WINDS HERDSMAN 32H	%wb	42	51	89	44			95	45	79	69	38	89	
reg: R 14287 Bdate: 19980101	BIO EPD	-2.0	0.9	41.0	36.0	49.0	4.6	15.2	0.7	-0.3	-1.1	-0.6		
tattoo: NOR 32H	acc	85	95	91	89	2	71	77	52	52	57	55		
WEST WINDS JANUS 8J	%wb	73	84	60	81			94	91					
reg: D 10927 Bdate: 19990413	BIO EPD	-0.1	-1.1	31.0	54.0	7.0	4.2	23.4						
tattoo: WW 8J	acc	56	83	69	65	2	37	42						
WEST WINDS JIGSAW 13J	%wb	99	97	11	5			87	53					
reg: R 14745 Bdate: 19990324	BIO EPD	4.8	-3.4	20.0	14.0	0.0	2.9	16.3						
tattoo: SMB 13J	acc	61	86	65	52	0	37	13						
WEST WINDS MINUTEMAN 44M	%wb	30	75	67	27			93	67	49	74	95	25	
reg: [CAN]R16521 Bdate: 20020105	BIO EPD	-2.8	-0.5	33.0	30.0	9.0	4.1	18.2	0.4	-0.3	-0.7	-1.7		
tattoo: NOR 44M	acc	73	91	86	82	1	48	55	63	63	68	65		
WEST WINDS PEPPER 31P	%wb	96	90	98	88			99	96					
reg: Bdate: 20040506	BIO EPD	2.8	-1.8	50.0	61.0	0.0	8.7	26.3						
tattoo: SMB 31P	acc	62	85	76	58	0	32	30						
WEST WINDS PHOENIX 25P	%wb	22	47	84	21			80	61	48	5	6	28	14
reg: Bdate: 20040202	BIO EPD	-3.4	1.1	39.0	28.0	0.0	2.1	17.2	0.4	-0.4	-1.3	-1.6	-0.5	
tattoo: SMB 25P	acc	71	90	81	68	0	39	36	41	41	45	55	53	
WILLOW CREEK COMMANDER 26C	%wb	36	55	42	42			99	99	51	83	76	91	99
reg: D 5942 Bdate: 19930206	BIO EPD	-2.4	0.7	28.0	36.0	16.0	7.1	46.6	0.4	-0.2	-0.9	-0.4	0.8	
tattoo: DKA 26C	acc	87	96	91	74	3	63	60	41	41	49	59	49	
WIIW MISTER CORBY 1R	%wb	48	34	84	90			25	61	99	5	35	19	99
reg: R 4575 Bdate: 19830503	BIO EPD	-1.7	1.8	39.0	63.0	118.0	-2.0	17.2	1.2	-0.4	-1.1	-1.8	0.9	
tattoo: WIIW 1R	acc	94	98	96	95	11	87	88	85	79	94	95	96	
WSS MIGHTY DIO 43M	%wb	89	95	16	3			96	73	91	23	87	59	29
reg: R 1166 Bdate: 19800401	BIO EPD	1.4	-2.8	21.0	11.0	139.0	5.0	19.2	0.9	-0.3	-0.8	-1.2	-0.2	
tattoo: DIO 43M	acc	95	98	94	93	38	93	92	25	11	82	86	86	
WSS REX 6R	%wb	40	14	1	9			81	55	90	8	8	97	84
reg: R 1921 Bdate: 19830328	BIO EPD	-2.1	3.2	10.0	20.0	60.0	2.2	16.5	0.9	-0.4	-1.3	0.0	0.1	
tattoo: HAR 6R	acc	86	95	88	82	13	82	84	15	12	36	45	43	
ZAR SIR ALARIC 54A	%wb	40	7	62	65			74	95					
reg: R 7780 Bdate: 19910402	BIO EPD	-2.1	4.0	32.0	44.0	21.0	1.6	25.5						
tattoo: ZAR 54A	acc	63	86	65	52	4	55	61						
ZAR SIR BARCLAY 60B	%wb	21	32	34	37			63	52					
reg: D 5083 Bdate: 19920326	BIO EPD	-3.5	1.9	26.0	34.0	18.0	0.7	16.1						
tattoo: ZAR 60B	acc	71	88	71	63	6	61	60						
ZAR SIR WALDO 2W	%wb	1	2	2	13			1	1					
reg: D 1022 Bdate: 19870217	BIO EPD	-8.4	5.5	12.0	22.0	17.0	-9.2	5.1						
tattoo: ZAR 2W	acc	63	84	63	49	4	54	61						
ZAR SIR ZEUS 13Z	%wb	61	68	42	58			1	1	18	65	44	90	78
reg: D 3387 Bdate: 19900222	BIO EPD	-0.9	-0.1	28.0	42.0	39.0	-7.8	3.1	0.1	-0.3	-1.1	-0.5	0.0	
tattoo: ZAR 13Z	acc	89	96	90	86	7	77	76	20	12	30	39	37	
ZAR SIR ZORRO 47Z	%wb	34	59	87	75			5	68					
reg: R 6325 Bdate: 19900326	BIO EPD	-2.5	0.4	40.0	50.0	20.0	-4.7	18.3						
tattoo: ZAR 47Z	acc	87	96	89	83	7	68	63						
ZC KIMO 17M	%wb	89	81	92	44			72	75	14	26	18	1	2
reg: [CAN]R16807 Bdate: 20020607	BIO EPD	1.4	-0.9	43.0	37.0	0.0	1.4	19.5	0.1	-0.3	-1.2	-3.4	-1.1	
tattoo: ZC 17M	acc	56	82	62	51	0	31	26	31	31	35	45	43	

Prog - # of progeny

Herds - # of herds sire used in

% wb - Percentile ranking within breed

- values range from 1 to 99

- higher values are desirable

BIO EPD - BIO's Genetic Evaluation

CE - Calving Ease

BW - Birth Weight

WG - Weaning Gain

YG - Yearling Gain

Gprog - # of Grand Progeny

Herds - # of Herds

Mat. CE - Maternal Calving Ease

Milk - Pounds of increased calf at weaning time due to milk production

REA - Rib-eye area

IMF - Marbling

BFAT - Backfat at the 12/13th rib site, Measured with ultrasound

SC - Scrotal circumference; HT - Height at the hips



**Ilse Vink - Secretary
Ontario Blonde
d'Aquitaine Association**



2007 was another busy year for the Ontario Blonde d'Aquitaine Association (OBdAA) and its members!

- Blonde information booths were set up at various trade shows in the province, including the International Plowing Match in Frankville and the Hastings County Plowing Match at Frankford
- The first day of the show at Frankford drew 10,000 visitors.
- We made our first appearance at the Peterborough Farm Show. A volunteer reported it was a good show, with a strong visitor turnout, and recommended we participate in future shows.

“The Ontario Blonde d'Aquitaine Association thanks all the volunteers for their dedication in promoting Blondes! The OBdAA and its members continue to promote the breed at shows, sales, bull test stations and related industry functions. Our juniors are also active promoting Blondes through 4-H projects in Ontario.”

For several years one of our main fund raising events has been the sale of raffle tickets for a fancy bred heifer or cash equivalent. This continues to draw many visitors to the Blonde booth at venues. The winning ticket is drawn at the annual Cream of the Crop Sale held in October. In 2007 Dwayne Acres, one of our members from Osgoode was the winner and chose the fancy bred heifer. Anyone interested in purchasing tickets can contact the association or a board member.

The 7th Annual Cream of the Crop Sale held in the fall at Hoards Station was again a successful event for the provincial association. Seventeen consignors offered 70 lots with a sale average of \$1,780. Buyers were pleased with the excellent quality and variety of animals that went through the ring.

The week following the Cream of

the Crop Sale, an OBdAA organized Blonde-influence stocker sale was held at Hoards Station. Calves sold were age-verified and vaccinated. Although prices were disappointing due to a sudden drop in the stocker market the week previous, subsequent prices at regular sales showed our stocker sale did rather well in comparison.

As on our provincial website we emphasize the breed's high daily gain as one of its outstanding features. As well the growth rate of Blonde d'Aquitaine cattle matches or often surpasses that of other high growth rate breeds. Most importantly too, high dressing ratios and the quality of meat means Blonde cattle crosses command premium prices at slaughter.

Ilse Vink
Secretary - OBdAA

– ROSS DIX MEMORIAL BURSARY –

We are happy to announce the establishment of a bursary in memory of Ross Dix donated by his son, John Dix, of Markdale, Ontario.

Throughout his lifetime, Ross Dix was known for his quiet willingness and helpful nature, exemplified wherever he went, or through whatever he did. He was continuously supportive of the Blonde breed and the Association. This bursary will continue his legacy.

BURSARY VALUE:

An amount of \$500 will be divided among qualified applicants.

ELIGIBILITY:

- **Only children of active members of the Ontario Blonde d'Aquitaine Association are eligible to apply.**
- **Applicants must be actively involved in an agricultural course or program at the College or University level.**

Applications should be sent in to the Ontario Blonde d'Aquitaine Association **by September 30, 2008:**

Ontario Blonde d'Aquitaine Association - c/o Ilse Vink, secretary
40 Gazley Rd., RR #1, Wooler, ON K0K 3M0

**FORTY ACRE
BLONDES**

**Proudly Presents Our
Main Herd Sire... FORTY ACRE
ROCCO 5R (P)**

YEARLING BULLS FOR SALE
Fertile • Easy Keepers • Quiet
**WE ALWAYS WELCOME
VISITORS OR PHONE CALLS!**

Don Mehler or Pat Filz
Box 418, Lampman, SK S0C 1N0
Ph: 306-634-2174 Cell: 306-421-6987
Email: fortyacreblondes@sasktel.net

**CANADIAN FARM BUSINESS
MANAGEMENT COUNCIL
AGRIWEBINAR SERIES**

The Canadian Farm Business Management Council continues to offer its Agriwebinar series. **All sessions are free.** In order to view the webinars you must register, but only once for all of them. For more information and to register go to:

<http://www.agriwebinar.com/>

Hilltop Orchard Farm

Blonde d'Aquitaine Seedstock - Est. 1986

Home of the reigning '06-07 National Grand Champion Bull
 Reserve Champion Bull • Grand Champion Female • 1st place heifer calf
 & Polled Fullblood herdsire Norlock Nick – the *backfat King!* • Private treaty sales
 year round • A quality selection of herd sires, females, embryos & semen
 Easy-keeping – Hay fed – *the working kind – for the working class!*



Complete Sales Management

Blonde d'Aquitaine Sales our Specialty – Where satisfied Customers consign
 Order buying • Ring Service • Commission Sales • Photography by Ashley
Consider us for your next sale or sale consignments – production or dispersal

Dave & Sheila McNeven & Family • 4426 County Road # 2, RR # 3 Hastings
 Ontario K0L 1Y0 • (705) 295-6208 • email: mcnevan@nexicom.net

Premises Identification.

The Canadian Cattle Identification Agency is encouraging every producer to obtain a Premises Identification (Premises ID) number by reporting the legal land description of their home quarter or operation in the CCIA database. Premises ID will provide the CCIA and/or CFIA with specific location information if any animal health or food safety issues should ever arise.

To submit your Premises ID information call CCIA by phone at 1-877-909-2333 or contact your local Mobile Field Representative.




www.canadaid.ca ~ 1-877-909-BEEF



BLUE DIAMOND BLONDES

- ✦ Repeat winner of the high-gaining Blonde Bull award at the Test Station at Douglas, Manitoba (five times in the past seven seasons).
- ✦ Inaugural winner of Man-Sask's Best All-Around Blonde Bull award in April 2007 reflecting excellence in both weight gain and carcass quality.
- ✦ Only 10% of our male calves are kept for our own use and for sale as herd sires. *Call early!*

Dave Gerega
Box 1379, Roblin MB R0L 1P0
E-mail: dger@mts.net
Phone: (204) 937-3426



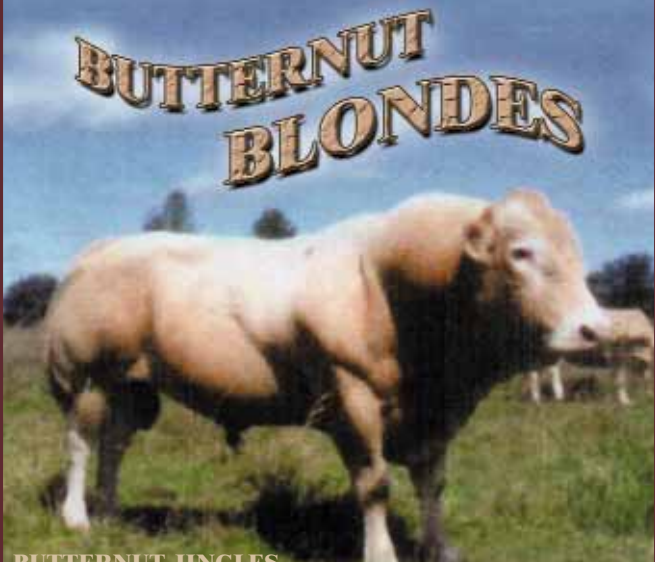
DOVECOTE BLONDES

John and Debbie Plas

2254 Jerseyville Road
R.R. #1, Jerseyville, ON L0R 1R0

905.648.5437
dplas@sympatico.ca

Thanks to Arsha Blondes and Peter Leger for purchasing our bulls at the "Cream of the Crop" Sales!



BUTTERNUT JINGLES

Butternut Blondes
• POLLED GENETICS •

Murphy & Judy Baker
Sunderland, Ontario

Phone/Fax: (905) 985-0563
Email: bakerblondes@sympatico.ca



**Hugh Lynch-Staunton -
CCA President**

CANADIAN CATTLEMEN'S ASSOCIATION STATE OF THE INDUSTRY

By Hugh Lynch-Staunton, CCA President

It would be an understatement to say that 2007 was both an interesting and eventful year. Hopefully 2008 will not have the continuous ups and downs that we saw last year and the Canadian beef cattle industry can return to somewhat normal operations.

The industry was faced with several major issues last year ranging from a financial blow as a result of the high Canadian dollar, increased regulatory requirements, and the high cost of feed, to various state requirements that challenged trade with the United States.

Regulatory requirements in Canada such as the enhanced feed ban have placed pressure on the industry as well. On July 12, the enhanced feed ban, which requires that specified risk materials (SRMs) not be used as an ingredient or input in animal feed, pet food or fertilizer and must be segregated, destroyed or permanently contained. Although the CCA supports the enhanced feed ban's goal to more quickly eradicate BSE in Canada and secure Canada's status as a controlled risk country under the World Organization for Animal Health (OIE), its implementation has resulted in added costs to all sectors of the industry relative to its competitors. The CCA continues to stress to the government the importance and need for financial support throughout this initiative.

Recognizing the financial crisis facing the industry, the CCA board and staff worked throughout November and December to find ways to assist producers in the short-term while determining the industry's long-term strategy. In particular, the CCA's goal was and continues to be to get funds to producers quickly and to address the current business risk management (BRM) programs so that they are more accessible to producers. The CCA is recommending that any assistance plan be national in scope and be equally accessible to producers across Canada; that programs not be ad hoc in nature and provide both short- and long-term benefits to producers; that they address the needs of all sectors of the cattle industry, regardless of size and structure; and that any programs be designed to minimize the risk of countervail actions by other countries. For more information on the CCA's recommendations to government visit the CCA website at www.cattle.ca and click on "What's New".

A piece of long-awaited good news came on November 19, when the United States Department of Agriculture (USDA)'s "Rule 2" came into effect, allowing for the export of any cattle – for breeding or for slaughter – born on or after March 1, 1999, and beef products of any age into the United States. In addition, on November 26, the Ranchers-Cattlemen Action Legal Fund (R-CALF)'s deadline to file for an appeal to the U.S. Supreme Court regarding Rule 1 passed. This means that R-CALF can no longer get a permanent injunction against the rule to allow cattle under-30-months of age to enter into the United States.

On behalf of the CCA board and staff, I want to extend our appreciation for the input and support of all producers and breed associations in Canada. I hope 2008 brings you prosperity and a healthy Canadian beef cattle industry.

Hugh Lynch-Staunton
CCA President

**Remember -
the 2008 Tattoo Letter is**

U

UK FOOT-AND-MOUTH DISEASE FREE

The World Animal Health Organisation (OIE) has granted the UK foot-and-mouth disease (FMD) free status. The UK has regained freedom from FMD without vaccination, following a three month disease free period. No cases of FMD have emerged since September 30, 2007.

The disease free status is the next step to the UK being able to export to countries outside of the EU after intra EU trade recommenced on December 31, 2007.



"THE HOME OF CUSTOMER SERVICE"

- Complete In-House and On-Farm Services
- Accredited Export Center
- Donor & Recipient Facilities & Management
- Recipient Herd

Toll Free: 1.877.686.8202

253147 Unit A, Bears paw Rd
Calgary, AB T3L 2P5

**Ph: 403.239.8882
Fax: 403.239.8886**

Email: aeg@altagenetics.com

Website: www.aeg.ca

Find out and
enjoy what thousands
of other Alberta beef
producers know.

Subscribe to
**ALBERTA BEEF
MAGAZINE**
and receive information
about your industry in
your back yard.

Alberta
BEEF
MAGAZINE

Call **1-800-387-2333**
or email
beefmag@telusplanet.net

Producers Finding Age Verification Simplified

by Brooke Hunter



Brooke Hunter

As the Canadian Cattle Identification Agency (CCIA) moves into its 10th year as an industry initiated and industry led traceability program, value added initiatives are beginning to play a more important role. Producers are being encouraged to register their legal land description to create a unique

"... short term pain for a long term gain."

premises identification number and age verify their animals as further steps towards the efficient containment and eradication of animal disease and meeting market access demands. Additional services, including move-in and move-out functions, are slowly being recognized by producers as valuable steps towards full animal movement tracking.

With any new initiative comes growing pains, and nowhere is this more evident than in the area of Age Verification. Nanita Blomquist, a CCIA Mobile Field Representative in Alberta, believes that the biggest problem is the misconceptions surrounding CLTS use.

"It's not as difficult as people think, it really is a quick process and there are lots of resources available to help."

One such resource is the staff at the CCIA's call centre that will walk producers and industry partners through age verification. By calling 1-877-909-BEEF, you will be put in touch with a customer service representative who will help you through the process and give you some tips for future database activity.

Jackie Dann, who works with Alert Agri Distributors in Manitoba, has seen first hand how the CCIA staff can make the process of age verification a matter of minutes. "There was a mix up with the age verified cattle and a CCIA customer service representative, was able to help us go back through and verify those cat-

tle and get them to sale. She was absolutely awesome. Age verification is a huge benefit for us and my customers."

Not all producers are currently participating in age verification of cattle, but as of January 14th, 2008 more than 2.24 million birth-dates of active animals under 30 months were recorded in the CLTS database.

"As a producer myself, I see the long-term benefits of age verification," says Blomquist. "The biggest challenge is that often producers don't see the return on the time and work they put into verifying their calves, but I see more buyers bidding on my calves because they are age verified and I see more export markets open to them."

Dann agrees. "For one thing it is good for the industry. The system works. If we verify the cattle and put in their dates, when we have problems we now have a method by which to track it, and it works."

Along with a growing interest in age verified calves from external markets and the cost saving benefit from no longer needing to use dentition, there are significant savings gained by identifying cattle under and over 30 months for required SRM removal procedures. The biggest benefit to age verification, and other value-added initiatives, however, continues to be the integrity that the Canadian Cattle Industry has gained. Known as a world leader in radio identification and animal tracking, cattle industries throughout the globe now look to the CCIA as a guideline to industry standards as age verified cattle become increasingly in demand by foreign markets.

"We all have to do our part to ensure the integrity of the system," says Dann. "You may not think it's worth the time today but when you are marketing your cattle, and if you're selling age verified cattle, you are going to see the advantage. It is a short term pain for a long term gain."

Brooke Hunter is the communications co-coordinator at the CCIA, Calgary, Alta. Contact her at brooke@canadaid.ca

CHANGES TO CATTLE TRUCKING LAWS

The Canadian Food Inspection Agency (CFIA) is currently assessing how cattle are transported in Canada with intentions of changing the laws and regulations that govern the industry. Changes proposed by CFIA may increase trucking costs for beef producers. In an effort to better understand current transportation conditions for the movement of cattle in Canada, the Ontario Cattlemen's Association is funding a University of Guelph research study to examine how current transportation conditions (space/loading densities and travel time) impact animal welfare, health, and performance for weaned calves and yearlings (500-900 lbs). The objectives of this research are to determine if current procedures for transporting cattle ensure animal welfare and how they impact health and performance after arrival.

More information can be obtained from one of the University of Guelph researchers involved in this study by telephone or e-mail:

- Matt Thrower 519-827-1346, mthrower@uoguelph.ca
- Ken Bateman 519-824-4120, ext. 5-4006, zkbateman@ovc.uoguelph.ca
- Ira Mandell 519-824-4120, ext. 5-3337, imandell@uoguelph.ca
- Tina Widowski 519-824-4120, ext. 5-2408, twidowsk@uoguelph.ca

GIVE YOUR BLONDES A TREAT!

HERBALT CBAA #16

BW: 114 lbs. Mat. Wt: 2400 lbs.



ETRIVIN DARLING-UTITION
TRINQUEVILLE
ERINETTE AMERICANO
BABINETTE

Well muscled with good legs, HERBALT's gain performance while in quarantine of 3.07 lbs/day suggests that he will compete well with other bulls. His daughters show excellent character, growth, size and feet.

HAMONIEUX CBAA #15

BW: 85 lbs. Mat. Wt: 2450 lbs.



ELDO TORINO
VATLANDA
ANTALIA KAPUCIN
GATIA

Sound, correct, well balanced, and offering good growth potential with moderate frame, HARMONIEUX is a well balanced bull whose daughters are showing excellent udders, teats, length of body and mothering ability.

SEMEN AVAILABLE:

Harmonieux R15
Elvernal Juggler R857
Gangbuster R31
Herbalt R16

DRAYTON VALLEY BLONDES

(Division of Mackenzie Agricultural Enterprises D.V. Ltd)

401, 4900 - 54 Ave.
Drayton Valley, AB T7A 1V8
Ph: 780-542-2268
Cell: 780-621-6219
Fax: 780-542-7388



**Clémence Landry - President
Quebec Blonde Association**

Mot de la Présidente

Bonjour Ami(e)s éleveurs.

En ce début d'année 2008, je tiens à vous souhaiter mes meilleurs voeux pour l'année en espérant que les projets qui vous tiennent à coeur se réalisent.

Bien que nous vivons des moments difficiles dans le monde agricole, je suis persuadée que tous ensemble nous pouvons continuer à développer les intérêts pour notre belle race qu'est la Blonde d'Aquitaine.

En terminant, je vous souhaite plein de petits veaux neufs en santé.

Amicalement
Clémence Landry, présidente

Letter from our president

Hello fellow breeders,

I would like to wish you all the best for 2008, hoping that all your wishes come true.

Realising that the farming world is going through difficult times, I am certain that we can continue to develop, together, this great breed of Blonde d'Aquitaine.

In closing, I hope you will succeed in breeding lots of healthy little calves.

Yours truly,
Clémence Landry, president

ASSEMBLÉES GÉNÉRALES ANNUELLES (Quebec)

Les assemblées générales annuelles se tiennent à la fin de février ou au début de mars à chaque année. Tous les membres en règle sont les bienvenus à cette importante rencontre.

ANNUAL GENERAL MEETING (Quebec)

Our annual general meeting is usually held at the end of February or beginning of March of every year. All members who have paid their annual fees can participate in this important reunion.



Ahhhh.... the life of a Blonde!!

AM LTD **OLDS AUCTION MART**
Sales Tuesdays & Fridays
Ph: 403-556-3655 Fax: 556-2688
www.oldsauction.com
www.rosehillauction.com

AS **Rosehill Auction Service Ltd**
Licensed Real Estate Agent
DANNY ROSEHILL RES: 556-6668
4613 - 54 St.,
Olds, Alberta
T4H 1E9

Internet marketing solutions for
the Livestock Industry
Box 330, Rochester, AB T0G 1Z0
wlex.ca
Western
LIVESTOCK EXCHANGE
UNABLE TO ATTEND
THE SALE?
With wlex.ca you can WATCH,
LISTEN & BID just like you were
there with Online Bidding over the
Internet!
Western Livestock Exchange
Mark Shologan • 780.699.5082
info@wlex.ca • wlex.ca

2008 Best of Breed
Coyote Lake Cattle Co.
Eric & Sid Leavitt • Ph: 403.653.2450
sid@coyotepub.com • www.coyotepub.com
Proud to be involved in the production
of the "Blonde Connection" 2008!!
Box 1797,
Cardston, AB
T0K 0K0

Fantin AgMarketing Inc.
Gloria Fantin
Independently
Offering:

- ✓ Advertising Services for Beef Producers
- ✓ Advertising & Publication Consulting
- ✓ Advertising Sales Representation
- ✓ Writing Services & Distribution

Gloria Fantin
Ph: 403.289.3836
fantinagmarketing@gmail.com
or
fanting@telus.net
www.fantinagmarketing.ca

Advertiser Index - A heartfelt "THANK YOU" to our advertisers!!

Alberta Beef Magazine.....33	Forty Acre Blondes.....30
Alta Embryo Group.....33	High Rock Farms.....15
American Blonde d'Aquitaine Assoc. .34	Hilltop Orchard Farm.....31
Arsha Blondes.....3	KAM Blondes.....15
Bellevue Blondes.....15	Knobby Oak Farm.....15
Blonde Lady Farm.....15	Knox Innovations Inc.....6
Blue Diamond Blondes.....32	MacKenzie's Agricultural Enterprises..34
Brileen Hill Farms.....18	McIntyre Blondes.....15
Butternut Blondes.....32	Olds Auction Mart Ltd.....35
Canadian Cattle Identification Agency...31	Pine Coulee Blondes.....15
Complete Sales Management.....31	Pine Ridge Farm.....15
Coyote Lake Cattle Co.....35	Shambani Blondes.....15
Crystal Farms.....IBC	Spruce Vale Blondes.....15
DJ Farms.....5	SRC.....5
D.R.M Farms.....15	Triple K Blondes.....15
Dovecote Blondes.....32	Van Bakel Blondes.....OBC
Drayton Valley Blondes.....34	Western Livestock Exchange.....35
Fantin AgMarketing Inc.....35	Westlane Farms.....6
Ferme Super C.....15	West Wind Blondes.....IFC

Canadian Blonde d'Aquitaine Association

c/o Cdn. Livestock Records Corporation,
2417 Holly Lane, Ottawa, ON K1V 0M7

- **Phone: (613)731-7110**
- Fax: (613)731-0704
- E-Mail cbda@clrc.ca
- www.canadianblondeassociation.ca

– Board Of Directors –

President - Myrna Flesch

Box 334, Stavely, AB T0L 1Z0
Ph: (403)549-2371 Fax: (403)549-2374
Email: westwind@telusplanet.net

Vice-President - Ian Kruis

RR 1, 6325 Enfield Road,
Hampton, ON L0B 1J0
Ph: (905)263-2930 Fax: (905)263-2934
Email: farmerkruis@knoxpumpkinfarm.com

Secretary - Murphy Baker

1050 - 14th Line, RR 5
Sunderland, ON L0C 1H0
Ph: (905)985-0563
Email: bakerblondes@sympatico.ca

Treasurer - Marcel Lachance

3558 Highway 7, RR 3
Norwood, ON K0L 2V0
Ph: (705)639-2183
Email: marcel_lachance@sympatico.ca

Past-President - Dave McNeven

4426 County Rd #2, RR 3
Hastings, ON K0L 1Y0
Ph/Fax: (705)295-6208
Email: mcnevan@nexicom.net

Executive Member - Ron MacArthur

735 Salisbury Road
Moncton, NB E1E 1C4
Ph: (506)382-6630
Email: rmacarthur@rogers.com

Ken MacKenzie

7401, 4900 - 54 Ave
Drayton Valley, AB T7A 1V8
Ph: (780)542-2268
Fax: (780)542-7388
Email: kenkb@telus.net

John Plas

2254 Jerseyville Rd W, RR 1
Jerseyville, ON L0R 1R0
Ph: (905)648-5437
Email: dplas@sympatico.ca

Show & Sale - John Vink

40 Gazley Road, RR 1
Wooler, ON K0K 3M0
Ph: (613)397-1890
Fax: (613)397-1890
Email: jiv@reach.net

What Is Your Print Advertising Doing For You?

By Alana Lunn

Advertising and marketing are two areas that often get overlooked by cattle producers, but they can have a significant effect on profitability of the operation. It is important to develop a reputation for good quality cattle, and advertising and promotion are a good way to build your reputation. Breeders who take the approach that they do not need to advertise will soon find themselves struggling to create brand recognition and awareness of their quality-breeding program. And a quality product is something worth advertising!

There are several different perceptions of “quality”. Ultimately a commitment to quality is needed in the cattle business. A commercial cow calf producer affects the marketability of their calves when they select their purebred breeding stock. Breeders have the option to produce cattle to meet their own desires and preferences but it is important from a marketing standpoint to produce cattle that meet the needs of potential buyers. And just as important is advertising your commitment to your customers’ success. Producers who make an effort to attain a reputation for quality cattle will be in a better position to attract more buyers to their product.

Breeders are presented with a huge array of potential marketing and advertising mediums and it can be challenging to select the ones that earn you the most bang for your buck and still keep you within your advertising budget. The most common advertising method used by cattle producers is print. Advertising in breed publications and beef magazines or papers allows you to reach a wide audience at an affordable price. These mediums are targeted to your specific clientele (commercial and purebred beef producers) and are generally well read.

One of the best ways to advertise your operation and keep your name visible constantly is to have a business card ad in your breed publication. Business card ads are economical and many breeders use the business card listing in their breed publication as their telephone book. Without an ad in this section you lose the effect of being seen continuously and your quality-breeding program is not getting the promotion it deserves. Without an ad in this section some people may even wonder if you are still in business!

Breed publications and other industry publications also offer the option of larger size ads. These ads, when created properly can be very effective in generating interest in your program. It is important to have good quality pictures if you are going to picture specific animals, poor quality pictures can instantly destroy all positive promotion you were going to receive from your ad. It is also important to design the ad so that it is easy to follow and you get your key message across. You may be advertising your bull sale, a new herd-sire, private treaty sales or your success at a recent show. Just make sure that your ad is only focusing on one or two of these things – not everything. In advertising remember less is more! Keep your ads clean and simple so that potential buyers don’t get lost in too many words or colors or pictures. For ideas on how to draft a creative and useful ad you can talk to your magazine publisher or look in other breed publications for examples of attractive and effective ads. And always remember to include your contact information in your ad, it seems simple, but also simple to overlook.

The decision to advertise should be an easy one. It promotes your quality-breeding program, it keeps your name in front of your customers and it generates more business for you, ultimately having a positive effect on your bottom-line. You must advertise to keep pace with your competition, both within the Blonde d’Aquitaine breed and the cattle industry.

*Alana Lunn is a former marketing & public relations specialist with one of Canada’s top 3 beef breeds
Contact her at alanalunn@gmail.com*



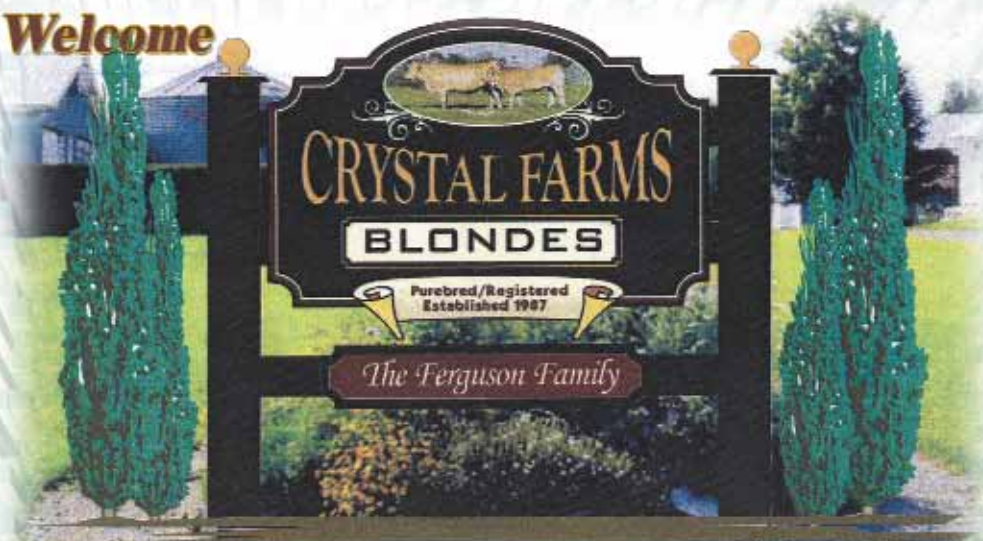
Alana Lunn

THANK YOU ...

- **Garth McClintock at Alberta Beef Magazine** for allowing us the opportunity to use photographs from your Blonde archive files. We very much appreciate the goodwill you have extended to Blonde breeders over the years.
- **Myrna Flesch (Assn. President)** for the many tireless hours devoted to the publishing of “The Blonde Connection” 2008.

• **Visitors Always Welcome**

- **PERFORMANCE TESTED HERD**
- **BIO**
- **BULLS, COWS, HEIFERS FOR SALE BY PRIVATE TREATY**



SANDY TOWN METHUSELAH

- **MAIN HERD SIRE AT CRYSTAL FARMS**
- **PEDIGREE: HEARTWOOD JEREMIAH X ROSENEATH DIANA**
- **"PRESIDENTS CUP" WINNER '03**



CRYSTAL TYLER 11T

- Sandy Town Methuselah x Lavelaine Miss Lacy
- Presently at Douglas Test Station - Ontario



CRYSTAL SPRING 22S (P)

- Sandy Town Methuselah x Crystal 2E
- New Owner - David Chevalier in Manitoba

Our Breeding is based upon PRODUCTION & DISPOSITION!

- We Cull for Temperament & Fertility
- We Breed A.I. to SPECIAL, ENCORE, and recently to RHEO LANCASTER 113L, a Polled Fullblood
- Special Thanks to the new owners of our cattle



CRYSTAL FARMS BLONDES

Paul & Mary Ellen Ferguson

R.R. 3 - 21 Crystal Road,
Jasper, Ontario K0G 1G0

Tel: 613-275-2422

Fax: 613-275-1713

QUALITY

Van Bakel Blondes

not quantity

is our specialty!!



BLONDE D'AQUITAINE BREEDING STOCK

- Horned • Polled
- Full Blood • Purebred

*genetics you
can count on!!*

At Van Bakel Blondes some of our main
A.I. sires include:

- ROSENEATH WILLIAM • ROSENEATH JUPITER
- WW CORBY • WSS REX • RHEO LANCASTER

• VAN BAKEL BLONDES •

Bill & Sue Van Bakel
R.R. #2,
Dublin, Ontario
N0K 1E0

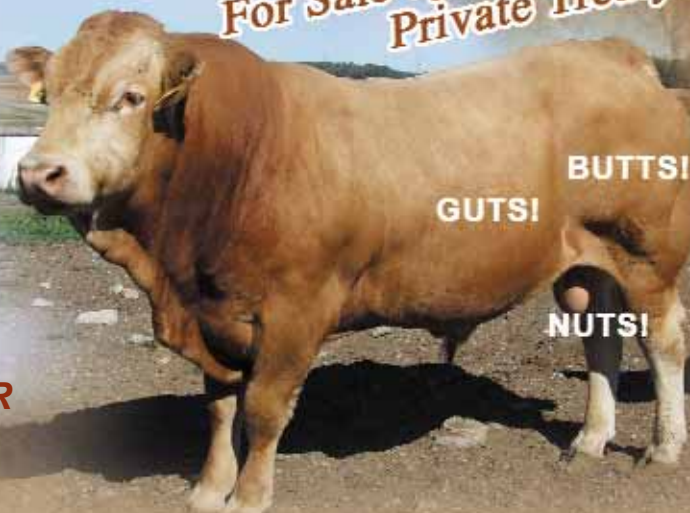
Phone: 519-345-2518

Email: vbb@ezlink.ca

Website: vanbakelblondes.ca

**OUR CATTLE ARE AVAILABLE FOR
VIEWING ON WEB CAM!**

*For Sale by
Private Treaty!!*



**We are selling by private treaty our current herd sire, DRM 12S
(Northern Justin x Roseneath Tami), two 2007 William bull calves and five 2007 William bred
heifers. Please Contact Us for More Information.**